



**UNIVERSITY OF COLOMBO, SRI LANKA**

UNIVERSITY OF COLOMBO SCHOOL OF COMPUTING

**DEGREE OF BACHELOR OF INFORMATION TECHNOLOGY (EXTERNAL)**

*Academic Year 2021 – 1<sup>st</sup> Year Examination – Semester 1*

***IT1306 – Free and Open Source Software for Personal Computing***  
***Multiple Choice Question Paper***

***2021***  
***(TWO HOURS)***

Important Instructions :

- The duration of the paper is 2 (two) hours.
- The medium of instruction and questions is English.
- The paper has 40 questions and 15 pages.
- All questions are of the MCQ (Multiple Choice Questions) type.
- All questions should be answered.
- **Each question has 5 (five) choices with one correct answer.**
- All questions will carry equal marks.
- There will be a penalty for selecting multiple responses as there is ONLY ONE correct answer.
- The mark given for a question will vary from 0 (*No correct choice is marked*) to +1 (*The correct choice is marked*).
- Answers should be marked on the special answer sheet provided.
- Note that questions appear on both sides of the paper.  
If a page is not printed, please inform the supervisor immediately.
- Mark the correct choices on the question paper first and then transfer them to the given answer sheet, which will be machine marked. Please completely read and follow the instructions given on the other side of the answer sheet before you shade your correct choices.
- Calculators are not allowed.
- *All Rights Reserved*. This question paper can NOT be used without proper permission from the University of Colombo School of Computing.

1) Which of the following software pair is an example of Proprietary Software?

- (a) macOS and Ubuntu
- (b) Firefox and Adobe Flash Player
- (c) Google Docs and Open Office Writer
- (d) Windows and Unix
- (e) Android and Eclipse

2) Consider the following statements.

- I. Proprietary software is focused on a limited market of both skilled and unskilled end users.
- II. Open-source software provides more flexibility and freedom than proprietary software, encouraging innovation.
- III. Open-source software projects are managed by a closed group of individuals of developers and programmers.

Which of the above statements is/are correct?

- |                         |                       |                        |
|-------------------------|-----------------------|------------------------|
| (a) (I) Only.           | (b) (II) Only.        | (c) (I) and (II) Only. |
| (d) (I) and (III) Only. | (e) All of the Above. |                        |

3) Which of the following commands is used to create three sub-directories F1, F2 and F3 in the current directory?

- |                       |                   |                    |
|-----------------------|-------------------|--------------------|
| (a) mkdir -p F1/F2/F3 | (b) mkd F1/F2/F3  | (c) mkdir F1 F2 F3 |
| (d) mkd F1\F2\F3      | (e) mdir F1 F2 F3 |                    |

4) Consider the following command and the result.

- I. COMMAND: `rmdir dir_1 dir_2`  
RESULT: *Remove the two directories dir\_1 and dir\_2 if they are empty. If not, an error message will be printed.*
- II. COMMAND: `pwd`  
RESULT: *Prompts the user to password protect the current working directory.*
- III. COMMAND: `mv dir_1 dir_2`  
RESULT: *If dir\_2 already exists, dir\_1 will become a subdirectory of dir\_2. If NOT dir\_1 will be renamed dir\_2.*

Which of the above command and the resulting pair is/are correct?

- |                         |                        |                          |
|-------------------------|------------------------|--------------------------|
| (a) (I) Only.           | (b) (I) and (II) Only. | (c) (II) and (III) Only. |
| (d) (I) and (III) Only. | (e) All of the Above.  |                          |

5) Identify the correct statement regarding the Oracle VM VirtualBox.

- |  |
|--|
| (a) It can only be installed in Open-Source Operating Systems.                         |
| (b) It is a proprietary hosted hypervisor for visualization.                           |
| (c) It can load multiple guest Operating Systems under a single host operating system. |
| (d) Terminal or Shell is another name for the Oracle VM VirtualBox.                    |
| (e) Command <i>list</i> is used to view the files and folders in the Oracle VM.        |

6) Consider the following Operating Systems.

- I. Linux
- II. Mac OS
- III. Windows

Complete the sentence below by choosing the most appropriate OS(s) listed above.

LibreOffice can be downloaded and executed on .....

- |                         |                          |                        |
|-------------------------|--------------------------|------------------------|
| (a) (I) Only.           | (b) (II) Only.           | (c) (I) and (II) Only. |
| (d) (I) and (III) Only. | (e) (I), (II) and (III). |                        |

7) Which of the following statements is correct regarding the different parts of the LibreOffice Writer window?

- |  |
|--|
| <ul style="list-style-type: none"><li>(a) The sidebar of the Writer window is always visible and cannot undock it to make it float.</li><li>(b) One cannot add or remove tools in the Standard toolbar.</li><li>(c) 'Rulers' and 'Find' are two toolbars available in the Writer window.</li><li>(d) The formatting toolbar is context-sensitive, and it shows the tools relevant to the cursor's current position or the selected object.</li><li>(e) The styles deck lets one add images and diagrams in the Gallery themes.</li></ul> |
|--|


8) Identify the correct combination of properties that can be applied to an image in the LibreOffice Writer document.

- |   |
|---|
| <ul style="list-style-type: none"><li>(a) Wrap, Hyperlink, Crop, Anchor, and Macro</li><li>(b) Emphasis, Quotation, Flip and Re-Size</li><li>(c) Highlight, Borders, Area, Styles and Compress</li><li>(d) Compress, Borders, Text flow and Spacing</li><li>(e) Position, Area, Alignment, Gradient, and Overlining</li></ul> |
|---|

9) Which of the following statements is correct regarding different options in LibreOffice Writer?

- |   |
|---|
| <ul style="list-style-type: none"><li>(a) The 'Merge Document' option under the track changes menu lets one combine it with a data source to create mail merge documents.</li><li>(b) Endnotes appear at the bottom of the page on which they are referenced, while Footnotes are collected at the end of a document</li><li>(c) The authors and reviewers can use the icon ¶ on the formatting toolbar to add comments to the document.</li><li>(d) Before inserting a cross-reference to a caption or an item in a bulleted list, the item must be referenced as a target, using either bookmarks or set references.</li><li>(e) Both hyperlinks and cross-references do not automatically update if one changes the text of the linked item.</li></ul> |
|---|


Consider the unformatted text (Figure 1) and the formatted text (Figure 2) below in LibreOffice Writer to answer questions 10 and 11.



```

Code Name Semester Credits
EN1106 Introductory Mathematics 1 2
IT1106 Information Systems 1 4
IT1206 Computer Systems 1 4
IT1406 Intro to Programming 1 4
EN2106 Communication Skills I 2 2
IT2106 Mathematics for Com I 2 3
  
```

Figure 1: Unformatted Text



```

Code -----Name -----Semester*****Credits
EN1106 -----Introductory Mathematics -----1*****2
IT1106 -----Information Systems -----1*****4
IT1206 -----Computer Systems -----1*****4
IT1406 -----Intro to Programming -----1*****4
EN2106 -----Communication Skills I -----2*****2
IT2106 -----Mathematics for Com I -----2*****3
  
```

Figure 2: Formatted Text

- 10) Identify the correct Type (Column A) and the Fill Character (Column B) used to set different tab positions in formatting Figure 1 to Figure 2?

	Column A (Type)		Column B (Fill Character)
(I)	Left	A	None
(II)	Right	B	----- (Dash)
(III)	Centered	C	..... (Dot)
(IV)	Decimal	D	_____ (Underscore)
		E	Character (*)

- (a) 0.5:(I-A) & 1.5:(II-B) & 4.0:(III-D) & 5.0:(II-E)  
 (b) 0.5:(II-B) & 1.5:(IV-D) & 4.0:(III-E) & 5.0:(IV-A)  
 (c) 0.5:(I-C) & 1.5:(II-B) & 4.0:(III-E) & 5.0:(I-A)  
 (d) 0.5:(II-A) & 1.5:(I-B) & 4.0:(III-D) & 5.0:(I-E)  
 (e) 0.5:(IV-B) & 1.5:(I-D) & 4.0:(IV-E) & 5.0:(I-A)

- 11) Suppose one needs to select only the course codes, as illustrated in Figure 3.

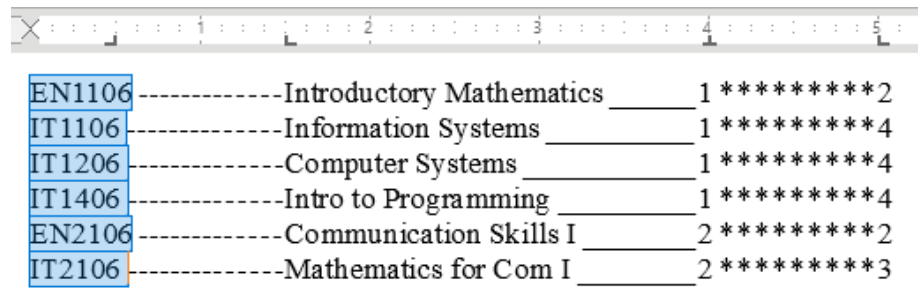


Figure 3: Vertical block selection

Identify the correct way to perform this selection.

- Change the selection mode to 'Column' from the Edit menu and highlight the section using the mouse.
- Select 'Extending selection' by clicking on the Selection icon on the status bar and highlight the section using the keyboard.
- Highlight the entire text and select 'Vertical Block' on the status bar.
- Click on 'Adding selection' by right-clicking on the Selection icon on the status bar and select the course codes.
- Change the selection mode to 'Block' from the Edit menu and highlight the course codes.

- 12) Consider the following document segment in LibreOffice Writer.

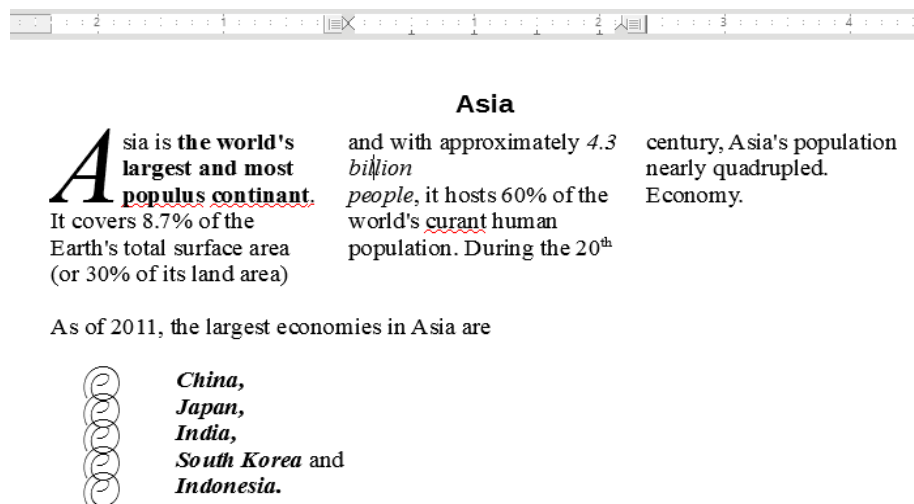



Figure 4: Text Formatting

Which of the following formatting techniques are applied in above Figure 4?

- Tables, Number List, Centered Alignment, Spelling, and Grammar
- Drop Cap, Bulleted list, Bold, Columns, and Superscript
- Subscript, Decimal Numbers, Underline, Tables, and Bold
- Tables, Drop Cap, Italics, Heading, Spelling, and Grammar
- Tabs, Indents, Bulleted list, Bold and Italics

- 13) Consider the document segments below formatted in LibreOffice Writer applying different wrapping techniques.

- (I)  Asia is the world's largest and most populous continent. It covers 8.7% of the Earth's total surface area (or 30% of its land area) and with approximately 4.3 billion people, it hosts 60% of the world's current human population.
- (II)  Asia is the world's largest and most populous continent. It covers 8.7% of the Earth's total surface area (or 30% of its land area) and with approximately 4.3 billion people, it hosts 60% of the world's current human population.
- (III)  Asia is the world's largest and most populous continent. It covers 8.7% of the Earth's total surface area (or 30% of its land area) and with approximately 4.3 billion people, it hosts 60% of the world's current human population.
- (IV)  Asia is the world's largest and most populous continent. It covers 8.7% of the Earth's total surface area (or 30% of its land area) and with approximately 4.3 billion people, it hosts 60% of the world's current human population.

Identify the correct Wrapping technique applied in the segments (I) to (IV) above.

- (a) (I)- Wrap Right, (II)- Page Wrap, (III)- No Wrap, (IV)- Wrap Through  
 (b) (I)- Wrap Left, (II)- Wrap Right, (III)- Optimum Page Wrap, (IV)- Page Wrap  
 (c) (I)- No Wrap, (II)- No Wrap, (III)- Wrap Through, (IV)- Optimum Page Wrap  
 (d) (I)- Wrap Left, (II)- Wrap Right, (III)- Wrap Through, (IV)- Page Wrap  
 (e) (I)- Wrap Right, (II)- Wrap Left, (III)- No Wrap, (IV)- Page Wrap

- 14) Consider the table below.

Index Number	Name	Sub 1	Sub 2	Average
S0001	G. P. Perera	45	67	56
S0034	M. I Madushanka	67	47	57
S0056	D. B. Seva	34	89	61.5
S0102	R. N. Rupa	23	23	23
S0156	D. H. Meena	61	56	58.5

Which of the formulas below can be used to display the average as illustrated on the highlighted cell?

- (a) =<C2> + <D2>/2  
 (b) =<C2:D2>/2  
 (c) =Average <C2:D2>  
 (d) =ave(C2:D2)  
 (e) = Total <C2:D2>/2

- 15) Consider the Caption dialogs and settings given below in adding a caption in LibreOffice Writer.

Figure 5: Insert Caption Dialog

Figure 6: Caption Option Dialog

Identify the most appropriate caption relevant to the given settings in Figures 5 and 6 above.

Assumption: Headings and Sub-headings are formatted using the appropriate header styles, and the outline numbering format is used to number the sections.

(a)	<p><b>5. Chapter 5</b></p> <p><b>5.1. Sub Topic – Chapter 5</b></p> <p><i>Table 5-1-My Table Example</i></p> <table border="1"> <thead> <tr> <th>Index Number</th> <th>Name</th> </tr> </thead> </table>	Index Number	Name	(b)	<p><b>5. Chapter 5</b></p> <p><b>5.1. Sub Topic – Chapter 5</b></p> <p><i>Table 5-A-My Table Example</i></p> <table border="1"> <thead> <tr> <th>Index Number</th> <th>Name</th> </tr> </thead> </table>	Index Number	Name
Index Number	Name						
Index Number	Name						
(c)	<p><b>5. Chapter 5</b></p> <p><b>5.1. Sub Topic – Chapter 5</b></p> <p><i>Table 5.1-A-My Table Example</i></p> <table border="1"> <thead> <tr> <th>Index Number</th> <th>Name</th> </tr> </thead> </table>	Index Number	Name	(d)	<p><b>5. Chapter 5</b></p> <p><b>5.1. Sub Topic – Chapter 5</b></p> <p><i>5.1.A. Text: My Table Example</i></p> <table border="1"> <thead> <tr> <th>Index Number</th> <th>Name</th> </tr> </thead> </table>	Index Number	Name
Index Number	Name						
Index Number	Name						
(e)	<p><b>5. Chapter 5</b></p> <p><b>5.1. Sub Topic – Chapter 5</b></p> <p><i>5.1.I. Text: My Table Example</i></p> <table border="1"> <thead> <tr> <th>Index Number</th> <th>Name</th> </tr> </thead> </table>	Index Number	Name				
Index Number	Name						

- 16) Consider the following spreadsheet segment created in LibreOffice Calc.

	COUNTA		$\downarrow$	$f_x$ $\times$ $\checkmark$	=COUNTA((A2:B4):C9)
	A	B	C	D	
1					
2	0	0	1		
3	0	0	1		
4	0	0	1		
5	1	1	1		
6	1	1	1		
7	1	1	1		
8	1	1	1		
9	1	1	1		
10	1	1	=COUNTA((A2:B4):C9)		
11					

As illustrated in the figure above the formula entered in C10 is **=COUNTA((A2:B4) : C9)**

What would the output of cell C10 be?

- |        |            |       |
|--------|------------|-------|
| (a) 6  | (b) 7      | (c) 8 |
| (d) 24 | (e) #NAME? |       |

- 17) Consider the following examples of cell references.

- I. = SUM (D1 : F5)
- II. = \$Sheet2.B\$4
- III. = \$A\$34 \* 4

Which of the above cell references is/are (an) example(s) for relative referencing?

- |                          |                         |                 |
|--------------------------|-------------------------|-----------------|
| (a) (I) Only.            | (b) (II) Only.          | (c) (III) Only. |
| (d) (II) and (III) Only. | (e) (I) and (III) Only. |                 |

- 18) Which of the following statements is correct regarding spreadsheets created using LibreOffice Calc?

- |   |
|---|
| <ul style="list-style-type: none"> <li>(a) A single cell can be given a user-defined name. However, Cell ranges cannot be renamed for referencing purposes.</li> <li>(b) The formula bar can be undocked and can be placed in the side panel based on the user's preference. However, the space cannot be extended to increase visibility.</li> <li>(c) Different colors can be applied to the sheet tabs. However, one cannot select multiple sheets, and only one sheet will be activated at a time.</li> <li>(d) Multiple columns and rows that are contiguous can be selected holding the 'Shift' Key. However, in selecting non-contiguous columns and rows, one should hold the 'Ctrl' Key.</li> <li>(e) The screen can be split horizontally, vertically, or both using the 'Split Window' option. However, in such sheets, columns and rows cannot be freed.</li> </ul> |
|---|



Answer questions 19-22, referring to the following spreadsheet created using LibreOffice Calc to store sales details. The formulae below are used to calculate the 'Market Price,' Sold Price % of Market Price, and Profit/lost, respectively.

	A	B	C	D	E	F	G
1							
2	Markup Percentage	0.3					
3	Commission	2%					
4							
5	Sales ID	Unit Cost	Market Price	Sold Price	Sold Price % of Market Price	Commission	Profit /Loss
6	SS001	\$2,300.00		\$3,000.00			
7	SS002	\$1,500.00		\$1,800.00			
8	SS003	\$4,300.00		\$5,000.00			
9	SS004	\$30,000.00		\$15,000.00			
10	SS005	\$5,789.00		\$9,000.00			
11						Net Profit	\$0.00
12							

**Market Price = Unit Cost + (Unit Cost \*Markup Percentage)**

**Sold Price % of Market Price = (Sold Price / Market Price) \* 100**

**Profit / Lost = Sold Price – Unit Cost – Commission**

- 19) Identify the correct formula to calculate the 'Market Price' in C6 so that the formula entered in C6 can be copied to C7:C10 by dragging the fill handle.

(a) =B\$6+(B\$6*B\$2)	(b) =B6+(B6*B2)	(c) =B6+(B6*B\$2)
(d) =B\$6+(B\$6*B2)	(e) =B6+(B6*\$B\$2)	

- 20) Suppose the commission is calculated as follows.

**If (Sold Price % of Market Price) >= 90%**

**Commission = Sold Price \* Commission (in Percentage)**

**Else**

**Commission = 0**

Which of the formulas below should be entered in cell F6 to calculate the commission relevant to the Sale ID SS001?

(a) =IF(E6>=90 THEN D6 * \$B\$3 ELSE 0)
(b) =IF(E6>=90 , D6 * \$B\$3 * 100 , 0)
(c) =IF(E6>=90 , D6 * B3 , 0)
(d) =IF(E6>=90 * 100 : D6 * \$B\$3 * 100 : 0)
(e) An Error will be displayed due to the Percentage symbol in B3

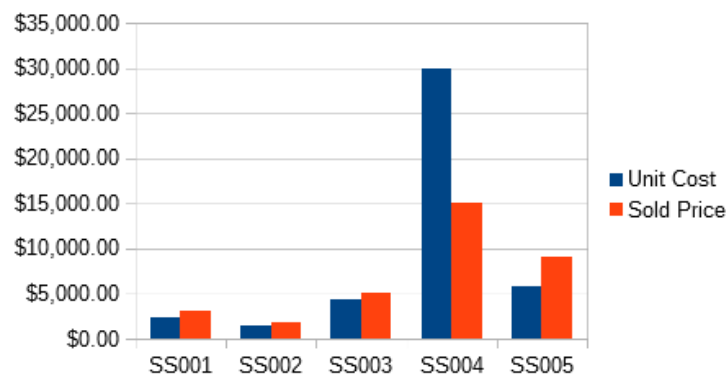
- 21) Suppose one needs to create a pivot table to display the minimum and the maximum profit/loss based on the selected 'Sales ID's as illustrated below.

	A	B	C	D	E
1	Sales ID	- multiple -		Data	
2				Min - Profit /Loss	Max - Profit /Loss
3				\$264.00	\$640.00
4					
5					
6					
7					
8					
9					
10					
11					

Identify the relevant Fields that should be included in the Pivot Table Layout.

- (a) Page Fields: Data; Column Fields: Sales ID; Row Fields: Min-Profit/Loss, Max – Profit/Loss.
- (b) Page Fields: Sales ID; Column Fields: Data; Data Fields: Min-Profit/Loss, Max – Profit/Loss.
- (c) Page Fields: Min-Profit/Loss, Max – Profit/Loss; Column Fields: Data; Data Fields: Sales ID
- (d) Column Fields: Data; Row Fields: Sales ID; Data Fields: Min-Profit/Loss, Max – Profit/Loss
- (e) Page Fields: Min-Profit/Loss, Max – Profit/Loss; Column Fields: Filter; Row Fields: Sales ID

- 22) Suppose one needs to display the 'Sales ID', 'Unit Cost' and 'Sold Price' on a Chart as illustrated below.



Consider the following properties set in the Data Range step of the Chart Wizard.

Note: Data table is in Sheet 1, and in selecting the data range, table headings are included.

- I. Data Range: \$Sheet1.\$A\$5 : \$B\$10 : \$Sheet1.\$D\$5 : \$D\$10
- II. Data Series in rows should be enabled.
- III. Both 'First row as label' and 'First column as label' should be selected.

Which of the above is/are correct in generating the above chart?

- (a) (I) Only.
- (b) (III) Only.
- (c) (I) and (II) Only.
- (d) (II) and (III) Only.
- (e) (I), (II) and (III).

- 23) Which of the following functions in LibreOffice Calc lets one combine data from two or more ranges of cells or sheets into a new range and apply several functions such as Sum or Average on the data?

(a) Goal Seek	(b) Detective	(c) Solver
(d) Scenarios	(e) Consolidate	

- 24) In LibreOffice Calc,

(a) one cannot print multiple pages of a single spreadsheet on one sheet of paper.
(b) adding a header and a footer is not possible.
(c) links to other documents with OpenDocument extensions will always be removed when exporting the spreadsheet into PDF.
(d) one can modify the type of compression to use for images when exporting the spreadsheet into PDF.
(e) the spreadsheet can not be exported into CSV and PDF.

- 25) Consider the following spreadsheet segment created in LibreOffice Calc

	J	K	L
1			
2			
3		A	B
4		C	B
5		B	A
6		B	C
7		A	A
8		C	B
9			
10			
11			A
12			
13			

Identify the correct formula in C11 to display the total number of 'A' characters typed in the spreadsheet?

(a) =COUNT(\$K\$3:\$L\$8)	(b) =COUNTIFS(\$K\$3:\$L\$8)	(c) =COUNT(K3:L8 , 'A')
(d) =COUNTA(K3:L8, 'A')	(e) =COUNTIF(\$K\$3:\$L\$8, K11)	

- 26) Which of the following statements is correct regarding databases and database applications?

(a) Relational Databases are the only type used to store and access structured information.
(b) MySQL is a free and open-source database.
(c) Databases and spreadsheets use the same means and ways to store, access, and manipulate data.
(d) NoSQL databases store only semi-structured data and information.
(e) Any developer can access the source code of Microsoft Access and do modifications to suit their needs.

27) Consider the following statements regarding creating Databases using LibreOffice Base.

- I. The Database Wizard dialog box only lets one create a non-existent new Database. Already existing Databases cannot be opened using the Wizard.
- II. A database created using Microsoft Access can be opened for editing purposes in LibreOffice Base.
- III. The Base environment contains four workbenches; Tables, Queries, Forms, and Reports.

Identify the correct statement(s) from the above.

- |                          |                           |                         |
|--------------------------|---------------------------|-------------------------|
| (a) (I) Only             | (b) (III) Only.           | (c) (I) and (III) Only. |
| (d) (II) and (III) Only. | (e) (I), (II), and (III). |                         |

Questions **28, 29, and 30** are based on a Database designed to manage customer orders of 'ABC Company.' The database consists of two tables, 'Customer' and 'Order'.

28) Consider the following 'Customer' table created using the Design View in LibreOffice Base. Field properties applied are listed under the description of the respective field.

Field Name	Field Type	Description
CustID	Text [ VARCHAR ]	Field Length: 5; Default Value: C0
Customer Name	Text [ VARCHAR ]	Field Length: 50; Entry Required: No
Contact No	Text [ VARCHAR ]	Field Length: 10; Entry Required: Yes
Address	Text [ VARCHAR ]	Field Length: 50; Entry Required: Yes

Field Properties	
Length	5
Default value	C0
Format example	C0

Suppose the data below are already entered into the 'Customer' Table.

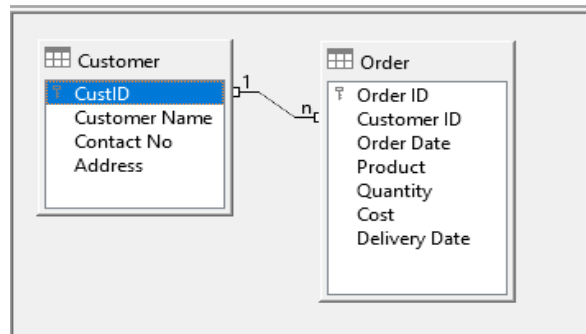
CustID	Customer Name	Contact No	Address
C0001	M. Dissanayake	774567890	23, Piliyandala
C0002	P. Perera	713459872	2, Nugegoda
C0003	N. Soysa	775687078	3, Madiwella
C0004	D. Raj	712324356	34, Nugegoda
C0F89	G. Perera	773450986	54, Kadawatha

What would happen when one tries to enter the following record into the table?

[CustID - C0f89, Customer Name – Blank, Contact No – 077, Address – 56]

- |  |
|--|
| <ul style="list-style-type: none"> <li>(a) The record will be successfully added to the table.</li> <li>(b) An SQL error will generate as CustID is already existing in the data table.</li> <li>(c) An SQL error will generate as Contact No only contains three digits.</li> <li>(d) An SQL error will generate as Address is a text field, and hence entering 56 is NOT allowed.</li> <li>(e) An SQL error will generate as the Customer Name is kept blank.</li> </ul> |
|--|

- 29) Consider the following relationship between the two tables 'Customer' and 'Order' in a Database created in LibreOffice.



Which of the statements below is correct?

- (a) 'Order ID' and 'Customer ID' are the primary keys of the 'Order' table.
- (b) Customer ID is the foreign key of the 'Order' table.
- (c) The relationship between 'CustID' in 'Customer' table and 'Customer ID' in 'Order' table is NOT allowed as field names are NOT similar.
- (d) A single customer can place ONLY ONE order, and hence only ONE record per customer will be allowed in 'Order' table entries.
- (e) In generating the Order table, one should set the same field properties of 'CustID' in 'Customer' table to 'Customer ID' in the Order table to relate the two fields 'CustID' and 'Customer ID'.

- 30) Consider the Query design view and the 'Order' table entries below to answer the following question.

Assumption: All errors are corrected in both tables 'Customer' / 'Order' and the relationships are properly established.

Field	Customer Name	CustID	Cost
Alias			Total Cost
Table	Customer	Customer	Order
Sort			
Visible	<input checked="" type="checkbox"/>	<input type="checkbox"/>	<input checked="" type="checkbox"/>
Function	Group		Sum
Criterion		'C0001'	

Order ID	CustID	Order Date	Product	Quantity	Cost	Delivery Date
ID3445	C0001	02/03/21	Bed Set	2	189000	July 3, 2021
ID3489	C0001	04/05/21	Chairs	6	6500	May 9, 2021
ID3502	C0002	03/05/21	Table	1	32000	June 5, 2021
ID3678	C0001	03/03/21	Cubboard	4	5600	July 3, 2021
ID4567	C0003	04/05/21	Dinner table	1	45000	May 30, 2021

Identify the correct output that will be generated by the above Query.

(a)	<table><tr><th></th><th>Customer Name</th><th>Total Cost</th></tr><tr><td>▶</td><td>M. Dissanayake</td><td>201100</td></tr></table>		Customer Name	Total Cost	▶	M. Dissanayake	201100	(b)	<table><tr><th></th><th>Customer Name</th><th>SUM("Order"."Cost")</th></tr><tr><td>▶</td><td>M. Dissanayake</td><td>201100</td></tr></table>		Customer Name	SUM("Order"."Cost")	▶	M. Dissanayake	201100												
	Customer Name	Total Cost																									
▶	M. Dissanayake	201100																									
	Customer Name	SUM("Order"."Cost")																									
▶	M. Dissanayake	201100																									
(c)	<table><tr><th></th><th>Customer Name</th><th>Cost</th></tr><tr><td>▶</td><td>M. Dissanayake</td><td>189000</td></tr><tr><td></td><td>M. Dissanayake</td><td>6500</td></tr><tr><td></td><td>M. Dissanayake</td><td>5600</td></tr></table>		Customer Name	Cost	▶	M. Dissanayake	189000		M. Dissanayake	6500		M. Dissanayake	5600	(d)	<table><tr><th></th><th>Customer Name</th><th>Total Cost</th></tr><tr><td>▶</td><td>M. Dissanayake</td><td>201100</td></tr><tr><td></td><td>P. Perera</td><td>32000</td></tr><tr><td></td><td>N. Soysa</td><td>45000</td></tr></table>		Customer Name	Total Cost	▶	M. Dissanayake	201100		P. Perera	32000		N. Soysa	45000
	Customer Name	Cost																									
▶	M. Dissanayake	189000																									
	M. Dissanayake	6500																									
	M. Dissanayake	5600																									
	Customer Name	Total Cost																									
▶	M. Dissanayake	201100																									
	P. Perera	32000																									
	N. Soysa	45000																									
(e)	A SQL Error will be generated due to the vialoations of ‘Group’ function																										

- 31) Consider the following SQL command syntax to delete a table in LibreOffice Base and the following statements describing the Keywords used in it.

**DROP TABLE "Table\_name" [IF EXISTS] [RESTRICT | CASCADE];**

- I. **IF EXISTS:** Prevents an error occurring if this table does not exist.
- II. **RESTRICT:** The deletion does not occur if the table is linked to another table by using a foreign key or if an active view of this table is available.
- III. **CASCADE:** All links to the table "Table\_name" are deleted. All foreign keys are set to NULL in the linked tables, and all views referring to the named table are entirely deleted.

- |                         |                          |                       |
|-------------------------|--------------------------|-----------------------|
| (a) (I) Only.           | (b) (II) Only.           | (c) (I) and (II) Only |
| (d) (I) and (III) Only. | (e) (I), (II) and (III). |                       |

- 32) Choose the best phrase to fill-in the blank below.

Changing the background and other characteristics of all slides in a presentation can be done using .....

- |                      |                   |                       |
|----------------------|-------------------|-----------------------|
| (a) Formatting Mask. | (b) Slide Master. | (c) Slide Transition. |
| (d) Slide Layout.    | (e) Customize.    |                       |

- 33) Identify the correct statement regarding presentation applications.

- |   |
|---|
| (a) Prezi is an example of an application used to design and prepare presentations.                         |
| (b) There are NO presentation applications for mobile devices that can do quick slide design editing.       |
| (c) Google Slides is an example of Free and Open Source Software.   |
| (d) Consistency and time management should NOT be considered when drafting the presentation flow initially. |
| (e) All presentation applications use the same mechanism to run a slide show.                               |

- 34) Consider the following.

- I. The Current Slide and the Upcoming Slide.
- II. An option to add and present user polls.
- III. Speaker notes and a presentation timer.

Which of the above is/are available in the presenter's console of LibreOffice Impress?

- |                          |                          |                         |
|--------------------------|--------------------------|-------------------------|
| (a) (I) Only.            | (b) (I) and (II) Only.   | (c) (I) and (III) Only. |
| (d) (II) and (III) Only. | (e) (I), (II) and (III). |                         |

- 35) Identify the correct statement regarding different functions available in LibreOffice Impress.

- |   |
|---|
| (a) Custom animation can be applied to the footer section of the slide.                             |
| (b) Graphic objects applied on a slide cannot be grouped to make a single object/image.             |
| (c) An existing or new spreadsheet file can be inserted into a presentation slide as an OLE object. |
| (d) Expand Slide option lets one increase the height and width of the selected slides.              |
| (e) Only the author can delete the comments he/she added to a presentation slide.                   |

36) Which of the following actions can be Undone when working with images in GIMP?

- (a) Individual clicks of an image selection using the Intelligent Scissors.
- (b) Step by step height/width changes of an image that are done using the Scale tool.
- (c) Individual letters that are typed on the image using the text tool.
- (d) Closing an image after saving all the edits.
- (e) An image that is duplicated using the Duplicate menu option.

37) Which tool below allows one to use the current brush to selectively copy a pattern and draw patterned lines or curves in GIMP?

- |                 |                   |                        |
|-----------------|-------------------|------------------------|
| (a) Paths tool. | (b) Stroked tool. | (c) Copy pattern tool. |
| (d) Clone tool. | (e) Dodge tool.   |                        |

38) Consider the following statements.

- I. The Horizontal Wrap Transform shifts the upper part of the image to the right and the lower part to the left.
- II. The Cage tool is similar to Free Selection (Lasso) tool, and it allows the user to select the transforming area by setting anchor points with freehand drawing.
- III. The Unified transform combines Rotate, Scale, Shear, and Perspective tools to act at once in a single operation.

Which of the above sentences is/are correct regarding the tools in GIMP?

- |                         |                          |                        |
|-------------------------|--------------------------|------------------------|
| (a) (I) Only.           | (b) (III) Only.          | (c) (I) and (II) Only. |
| (d) (I) and (III) Only. | (e) (II) and (III) Only. |                        |

39) Which of the following examples lists only transformation tools in GIMP?

- |                              |                                       |                           |
|------------------------------|---------------------------------------|---------------------------|
| (a) Perspective Clone & Crop | (b) Crop, Scale, Shear, Flip & Rotate | (c) Blur, Scale and Shear |
| (d) Heal, Sharpen & Dodge    | (e) Intelligent Scissors & Rotate     |                           |

40) Identify the correct statement regarding Layers in GIMP?

- |  |
|--|
| (a) Layer mode can be applied and its effect will be visible even if there is only ONE layer in the image. |
| (b) Existing layers in an image cannot be duplicated or copied.  |
| (c) All layers added in manipulating an image should have the same boundary size.                          |
| (d) 'Dissolved' and 'Merge' are the different types of Opacities in GIMP.                                  |
| (e) Adding a 'Layer Mask' is another way to control the transparency of a layer.                           |

\*\*\*\*\*